



### VANE WHEEL, MULTI-JET, DRY DIAL, MAGNETIC TYPE WATER METER

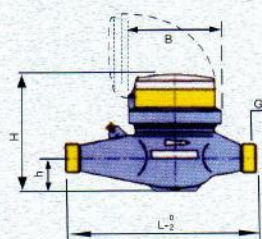
Model: DS97 TAR

•Application: Measuring the total volume of cold potable water passing through the meter.  
It's suitable for domestic use.

•Operating condition: Water temperature up to 50C  
The max.admissible water pressure 1.0MPa

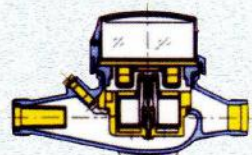
•Special feature:

- Simply design
- Hermetically sealed register
- High accuracy
- Negligible head loss at working flow-rate
- Magnet drive with anti-magnetic
- High-quality material with long life of service

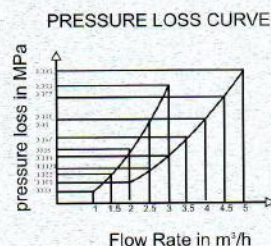
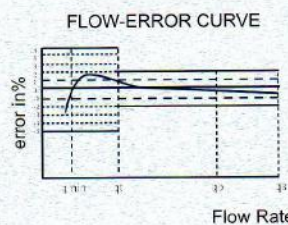


•The technical datas conform to ISO 4064 standard class B, and quality accreditation standard of ISO 9002

Hot water 90C model also available



#### Performance & Dimension



DESCRIPTION	UNIT	TECHNICAL DATA						
NOMINAL SIZE		DN15(1/2")	DN20(3/4")	DN25(1")	DN32(1-1/4")	DN40(1-1/2")	DN50(2")	
qs	m <sup>3</sup> /h	3	5	7	10	12	20	30
qp(ERROR LIMIT ±2%)	m <sup>3</sup> /h	1.5	2.5	3.5	5	6	10	15
qt(ERROR LIMIT ±2%)	l/h	120	200	280	400	480	800	3000
qmin(ERROR LIMIT ±2%)	l/h	30	50	70	100	120	200	450
MIN. READING	1	0.05	0.05	0.05	0.05	0.05	0.05	0.05
MAX. READING	m <sup>3</sup>	99999.9999	99999.9999	99999.9999	99999.9999	99999.9999	99999.9999	99999.9999
MAX. WORKING PRESSURE	Mpa	1.0	1.0	1.0	1.0	1.0	1.0	1.0
L	mm	165 (145)	190	260	260	300	300	
LENGTH WITH CONNECTIONS	mm	245 (225)	288	378	384	428	428	
H	mm	105	105	124	126	170	170	
h	mm	28	28	38	43.2	63	63	
B	mm	81	81	90	94	128	128	
G	Inch	1/2"BSP	3/4"BSP	1"BSP	1-1/4"BSP	1-1/2"BSP	2"BSP	
WEIGHT (WITHOUT CONNECTIONS)	kg	0.91	0.98	1.10	1.8	2.2	4.42	4.88
WEIGHT (WITH CONNECTIONS)	kg	1.15	1.20	1.40	2.29	3.08	5.3	6.38



## VANE WHEEL MULTI-JET DRY DIAL MAGNETIC TYPE WATER METER

Model: DS90 TAR

•Application: Measuring the total volume of cold potable water passing through the meter. It's suitable for domestic use.

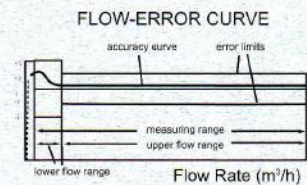
•Operating condition: Water temperature up to 50°C  
The max. admissible water pressure 1.6 MPa

•Special feature:

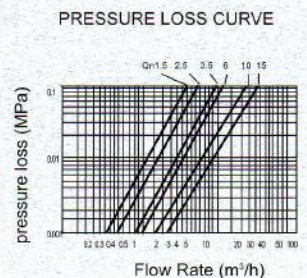
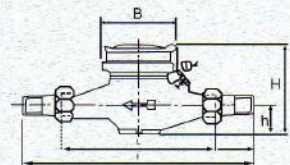
- Large measuring range.
- High flow accuracy.
- Steady error curve.
- Long life of service.
- Reliable operation.
- Magnetic shield protection.
- Negligible head loss at working flow-rates.
- Sealed & vacuumized register without any condensation problem.

•Note: The technical datas conform to ISO 4064 standard.

•Error curve: From tran. flow up to Max flow both inclusive:  $\pm 2\%$ .  
From Min. flow inclusive up to tran. flow:  $\pm 5\%$ .



DESCRIPTION	UNIT	HYDRAULIC DATA AND DIMENSIONS					
NOMINAL SIZE	mm	15	20	25	32	40	50
	Inch	1/2	3/4	1	1-1/4	1-1/2	2
Qmax PEAK LOAD CAPACITY (SHORT PERIOD)	m³/h	3	5	7	12	20	30
Qn NOMINAL FLOW RATE	m³/h	1.5	2.5	3.5	6	10	15
ΔP AT THE Qmax	Mpa	0.06	0.08	0.05	0.09	0.085	0.085
Qmin 1ST ACCURACY LIMIT WITH ERROR $\pm 5\%$	l/h	30	50	70	120	200	450
Qt 2ND ACCURACY LIMIT WITH ERROR $\pm 2\%$	l/h	120	200	280	480	800	3000
START UP FLOW RATE	l/h	12	14	20	26	50	50
NOMINAL PRESSURE	Mpa	1.6	1.6	1.6	1.6	1.6	1.6
Min. READING	l	0.05	0.05	0.05	0.05	0.05	0.05
Max. READING	m³	99999	99999	99999	99999	999999	999999
L	mm	145	165	190	260	245	300
I	mm	225	245	288	378	383	438
H	mm	120	120	130	130	170	170
h	mm	37	37	44	44	65	65
B	mm	98	98	98	98	130	130
WITHOUT CONNECTIONS	kg	1.40	1.46	1.64	2.34	2.42	3.82
WEIGHT WITH CONNECTIONS	kg	1.58	1.63	1.90	2.79	3.05	5.10
						4.43	6.00







### VOLUMETRIC WATER METER, CLASS C

Model: PD97 TRP

•Application: Measuring the total volume of cold potable water passing through the meter.  
It's suitable for domestic use.

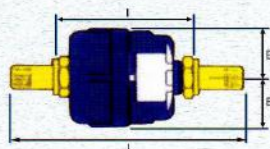
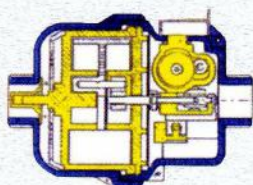
•Operating condition: Water temperature up to 50C,  
The max admissible water pressure 1.6MPa

•Special feature:

Semi-positive oscillating piston type  
Straight reading liquid capsulized register  
High accuracy  
Negligible head loss at working flow-rate  
Installation in any position  
Direct transmission, with reliable performance

•Robust construction

•The technical datas conform to ISO 4064 standard class C and quality accreditation standard of ISO 9002



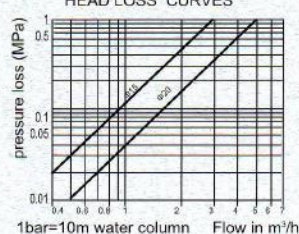
#### Performance & Dimension

DESCRIPTION	UNIT	TECHNICAL DATA		
		DN15(1/2")	DN20(3/4")	
NOMINAL SIZE				
qs	m <sup>3</sup> /h	3	5	
qp(ERROR LIMIT ±2% )	m <sup>3</sup> /h	1.5	2.5	
qt(ERROR LIMIT ±2% )	l/h	22.5	37.5	
qmin(ERROR LIMIT ±2% )	l/h	15	25	
MIN. READING	1	0.05	0.05	
MAX. READING	m <sup>3</sup>	99999,9999	99999,9999	
MAX. READING PRESSURE	Mpa	1.6	1.6	
△ P AT qs	Mpa	0.1	0.1	
L	mm	195	254	290
I	mm	115	154	190
B	mm	43	43	
B	mm	43	43	
WEIGHT (WITHOUT CONNECTIONS)	kg	0.97	1.18	1.30
WEIGHT (WITH CONNECTIONS)	kg	1.14	1.44	1.56

PRECISION CURVE



HEAD LOSS CURVES





## REMOVABLE ELEMENT WOLTMAN WATER METER

Model: LXSC

Application: To totalize the total volume of cold water flowing through the water main pipe line.

It is suitable for industrial use.

Operating condition: The water temperature up to 40°C

The maximum admissible water pressure 1MPa

Features: Model LXSC meter is a full bore helix type, magnetic drive, dry dial water meter with an inter changeable measuring unit.

It has the advantages of small resistance, negligible head loss, big capacity, excellent accuracy and long life of service.

The measuring unit with sealed indicator offers the meter with very clear reading condition.

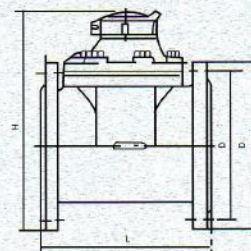
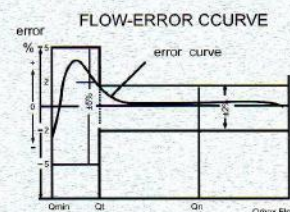
Note: The technical datas conform to ISO 4064 standard

Hot water 90°C model also available



### Main technical data

Size mm	Class	Max flow	Nominal flow m <sup>3</sup> /h	Transitional flow	Min flow	Min reading m <sup>3</sup> /h	Max reading
50	B	30	15	3.0	0.45	0.01	999999.9
65	B	50	25	5.0	0.75	0.01	999999.9
80	B	80	40	8.0	1.2	0.01	999999.9
100	B	120	60	12	1.8	0.01	999999.9
150	B	300	150	30	4.5	0.1	9999999
200	B	500	250	50	7.5	0.1	9999999



### Dimintions and weights

Size	Length L	Width W	Height H	Connecting flange		Weight
		mm		standard	connecting Bolt	kg
50	200	172	247	NP10 or JIS10K	4-M16	12
65	200	185	260		4-M16	13
80	225	200	264.5		8-M16	15
100	250	220	271.5		8-M16	19
150	300	285	301.5		8-M20	30
200	350	340	358.5		8-M20	42

